

OL 730C/CV Software Development Kit

The Software Development Kit (SDK) for the OL 730C and OL730CV Radiometer/Photometer is available to help programmers develop their own applications or integrate OL730C/CV control within other automated test and measurement systems.

The SDK for the OL730C/CV is comprised of:

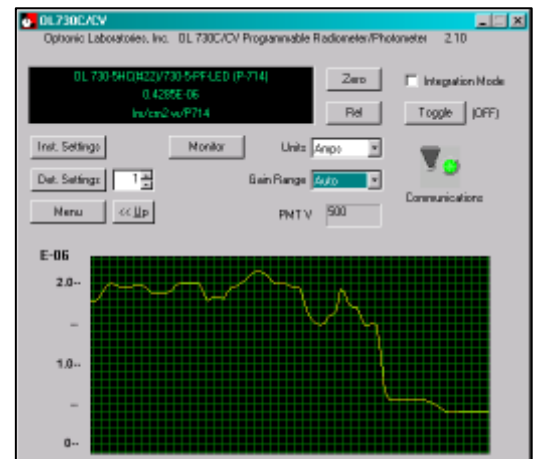
- ActiveX Controls
- C++/MFC Panel Application
- List of ActiveX Methods
- LabVIEW Application
- Excel Add-In

ActiveX Controls

For custom programming, access the low-level functionality of the instrument by calling ActiveX methods from within your own custom container. A listing of available methods (functions) is provided. Three ActiveX controls are provided: one with dialog user interface, a second that serves as a low-level instrument driver, and a third that displays a scrolling plot. Containers can be written in various programming languages, such as C++ and Visual Basic.

C++/MFC Panel Application

This is a program that serves as an instrument controller and as an example ActiveX container. It employs all three ActiveX controls: the user interface dialog, the low-level driver, and the plot display. The provided source code is written in C++. It uses the MFC (Microsoft Foundation Classes) library and was developed in Microsoft Visual Studio.



List of ActiveX Methods

ActiveX methods are functions accessible from an ActiveX container program. The SDK provides methods available from the three ActiveX controls. An example listing is:

- SelectDetector** *BOOL SelectDetector (short sDetector)*
Select an active detector from the instrument's detector library.
Input: *short sDetector*. A detector library index number (1 – 25).
Return: *BOOL*. TRUE indicates successful command completion.
Command: *S [sDetector]* (low-level command sent to the firmware).

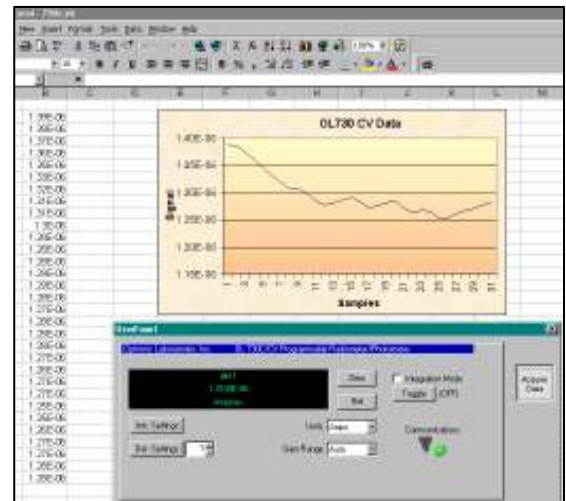


LabVIEW Application

The LabVIEW panel application connects to the instrument via serial or GPIB ports. This program provides for complete control of the instrument and requires no programming. Source code (vi's) used to develop this application is also included. These vi's function as LabVIEW instrument drivers for customers who own LabVIEW and wish to develop their custom applications in this development environment.

Excel Add-In

The Excel Add-in allows access to the graphical user interface, displayed as an embedded form object. Concurrently, ActiveX methods are accessible from user generated custom VBA code. An Excel workbook is provided as an example of VBA code that uses the Add-in.



System/ Software Block Diagram

